



The light FANTASTIC

Sculptural forms and neutral tones turned a gloomy and awkward bathroom into a serene sanctuary

WORDS & STYLING RUTH WELSBY PHOTOGRAPHY RHIANNON SLATTER

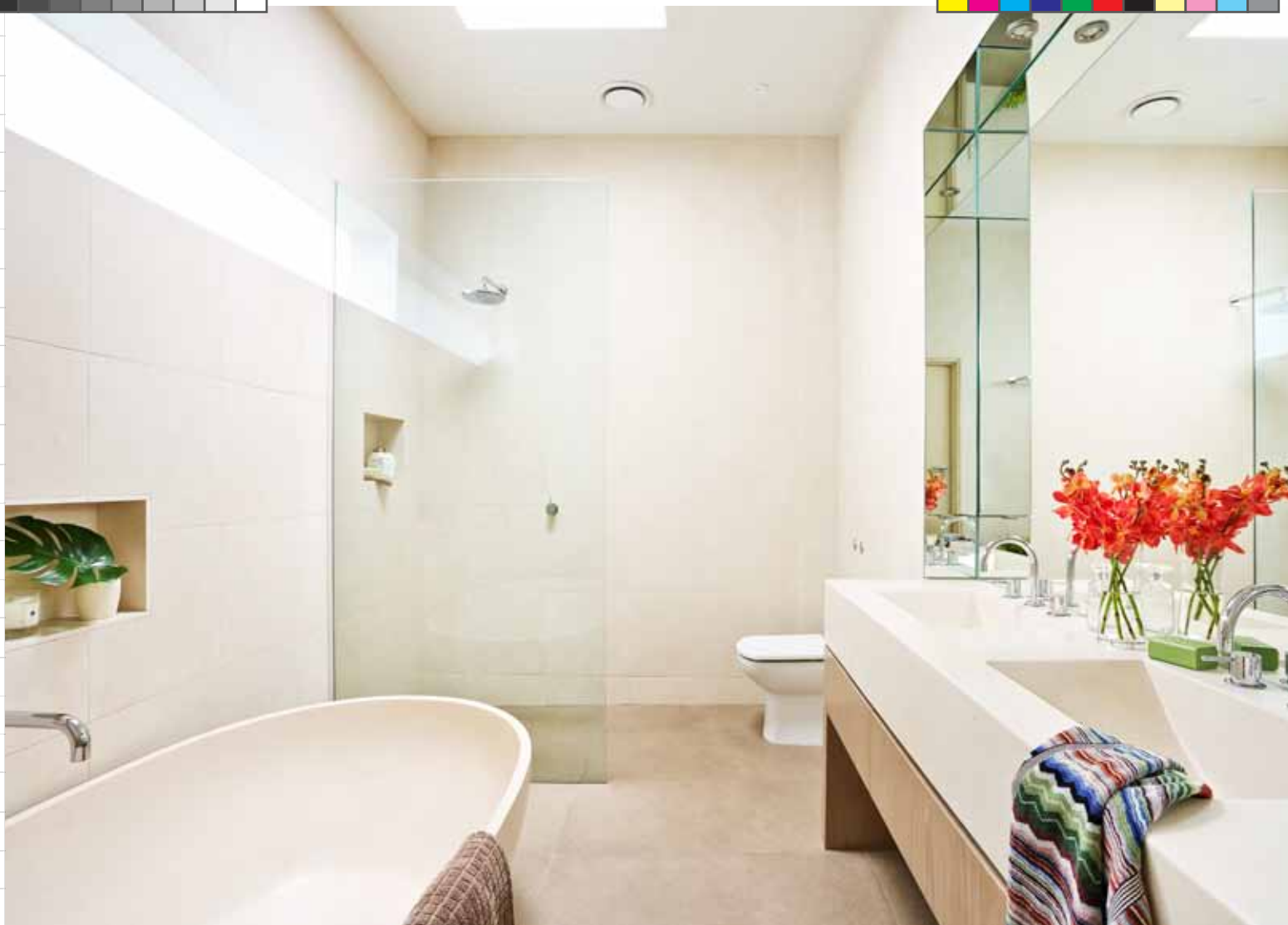
Asking a salesman to jump in the tub with you isn't the usual way of buying a bath, but for homeowner Debbie, a comfortable fit was essential. "Our old bath was really spacious – I was hesitant to lose it, even though our bathroom desperately needed a makeover," she explains. Confident with her new bath, Debbie set about revitalising her ensuite with the help of Shareen Joel Design.

To take advantage of the room's generous proportions, the ensuite was given an elegant facelift to create a haven for Debbie, her husband, Jacob, and their children, Benji, Ariella and Mia. Inspired by hotel style, Debbie chose tiles in soft, neutral tones for a timeless aesthetic and opted for a large, walk-in shower for practicality. "We've managed to create a wonderfully serene space that's also low maintenance, freeing up precious time for long soaks in the bath," she says with a smile. >



Expect to pay
\$16,000
excl. building costs*

* COST BASED ON OWNER'S ESTIMATE



SPACED OUT

Making the most of the room's size was the first step, with a thorough rearrangement of the floor plan. "I wanted a greater sense of openness in the bathroom and more natural light, so we ripped out the old bath and put in a single shower, moved the vanity unit to the opposite side of the room, removed the bidet and installed a frosted window," explains Debbie. Taking centrestage in the new streamlined room is Debbie's pride and joy, the freestanding 'Haven' bath from Apaiser.

SIZE MATTERS

"We spent years trudging to the guest bathroom for a shower because ours spilled water over the bath and flooded the floor," explains Debbie. It's not surprising then that she was keen to incorporate a generous shower into the new layout, but initially feared that the popular walk-in style suggested by Shareen would feel cold and draughty. However, her early concerns have been overcome. "I love our new wet-room style shower, it's so open and spacious," she says. Frameless glass screens the shower, contributing to the room's expansive feel, while a Grohe 'Rainshower' showerhead from Finer Bathrooms and 'Scala' mixer from Rogerseller complete the contemporary look.

CALMING HUES

Keen to inject some contemporary flair and a note of practicality, Debbie opted for a muted colour palette with smooth finishes. "I love neutral colours as they inspire a feeling of warmth and will stand the test of time," she explains. Large porcelain tiles from Signorino Tile Gallery envelop the room, extending up to the ceiling for a cohesive, fuss-free look. For practicality, Debbie chose tiles in a slightly darker shade for the floor. The two-tone scheme is further complemented by practical recessed wall niches, which provide handy storage for everyday toiletries and double as pretty display shelves.





VANITY FLAIR

With space abundant, Debbie picked out a 'Scoop' double basin from Apaiser with bespoke undercounter storage from Teasel Wood Cabinets & Custom Joinery. "We only had a single basin in our old bathroom, but two is more practical – now, we can both get ready at the same time without being in each other's way," says Debbie. Ample drawer space and storage units – recessed into the wall cavity – keep the room clutter-free. Power points were included in the undercounter drawer units.



BATHING BEAUTY

The curvaceous 'Haven' bath from Apaiser is the perfect place to unwind after a hectic day. "We designed the room around the bath, so it was obvious from the start that it would be the focal point," says Debbie. Made from composite stone, the bath is comfortable and easy to maintain – a real selling point for Debbie. "My children frequently use this bathroom, so functionality was very important," she says. "It's a great place to relax and because it's so big, someone always wants to hop in for a soak and a chat." A pair of uplights in the floor behind the bath give a soft glow – a great alternative to candles. >

Great idea: Debbie's builder, David Larkin, suggested the 'Odourvac' ventilation system, which connects to the toilet pipework and works on a fan switch



source book

Contacts: Interior design Shareen Joel Design, (03) 9510 0433, shareenjoel.com.
Builder David Larkin, 0418 554 258.

Bath: 'Haven' in Birch, Apaiser.

Tapware: 'Scala' shower/bath mixer, wall spout, both Reece. 'Logic' basin set, Rogerseller.

Tiling: 'Galia Noce' porcelain floor tiles, Signorino Tile Gallery.

Vanity: Custom-made in fumed oak veneer, Teasel Wood Cabinets & Custom Joinery.



THE LIGHT FANTASTIC

Get the look



Perrin & Rowe
shower rose with
arm in Chrome,
\$610, Cass
Brothers.



David Hicks candle
in Lime, Basil
& Mandarin, \$105,
Jo Malone.



Kohler 'Stillness'
basin set, \$589,
Tradelink.



Great idea: Use the wall cavity to install display recesses and above-the-sink storage to make the most of the space, whatever its size

'KL' cabinet with
ceramic basin with
CaesarStone Mink
shelf, \$2726, Omvivo.



'Luxury' towel range,
from \$11.95, 'Bamboo'
bath mat in White, \$69.95,
all Onkaparinga.



'Haven' bath with base, from \$6375/small, Apaiser.
Stockists, page 220

